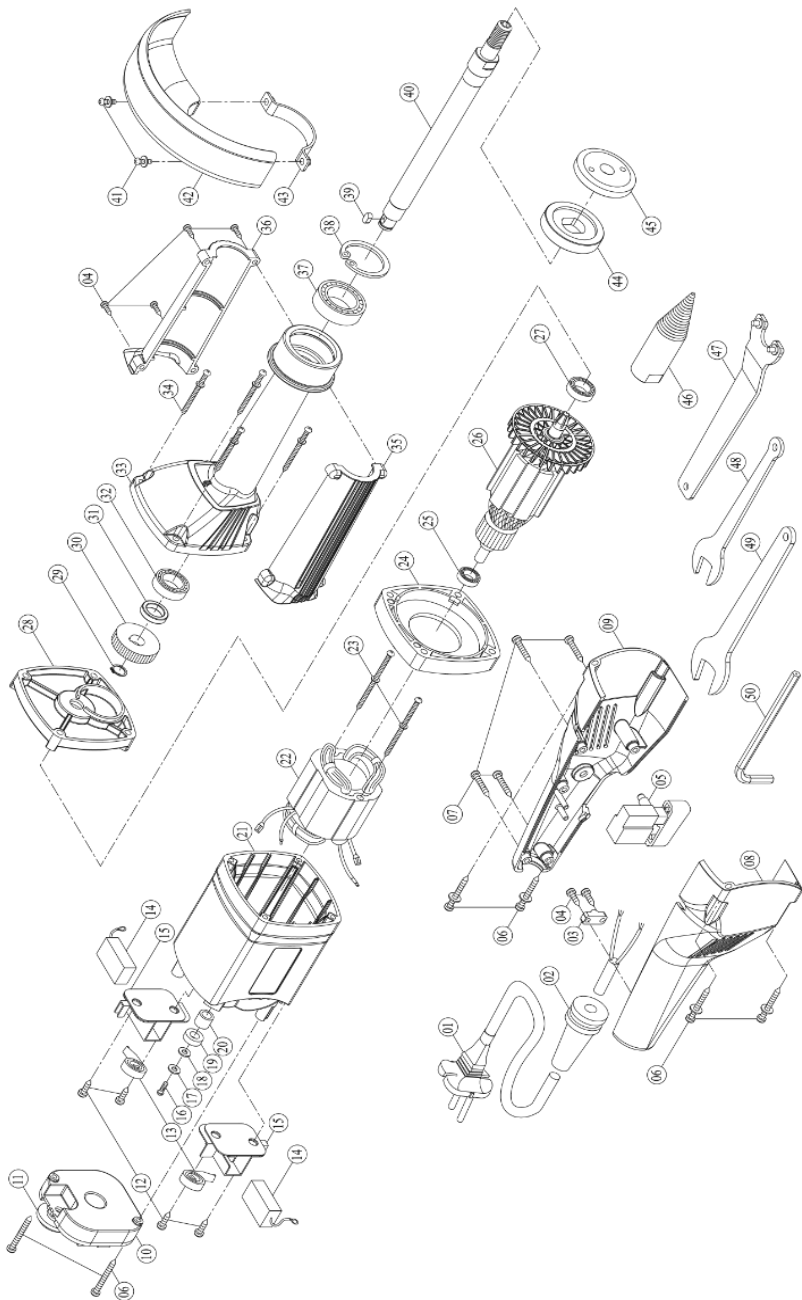


STRAIGHT-MATE [30-A 606 – 110V] / [30-A 626 – 220V]

EXPLODED VIEW / VUE EXPLOSÉE



PARTS LIST

STRAIGHT-MATE
110V - 30-A 606

STRAIGHT-MATE
220V - 30-A 626

NO.	QTY	Description - EN	Description - FR	Order No.	
1	1	POWER SUPPLY CABLE (UL-16Ax2Cx3M-SJTW)	CABLE COMPLETE-SJ 16/2	48Z201	
1B	1	POWER SUPPLY CABLE (1.0x3Cx2.5M-H05VVF)	CABLE ELECTRIQUE (1.0x3Cx2.5M-H05VVF)	48Z222	220V
2	1	CORD ARMOR	PROTECTEUR DE CABLE	48C100	
3	1	CABLE CLIP	COLLIER POUR CABLE	48C101	
4	6	PANHEAD TAPPING SCREW-B (M4x14)	VIS M4X14	48S159	
5	1	SWITCH (110V)	INTERRUPTEUR 110V	48C134	
5B	1	SWITCH (220V)	INTERRUPTEUR (220V)	48C154	220V
6	6	PANHEAD TAPPING SCREW-B-W/WASHER (M4x30)	VIS M4X30	48S165	
7	4	PANHEAD TAPPING SCREW-B (M4x16)	VIS M4X16	48S169	
8	1	HANDLE HALF-RIGHT (BLACK)	COUVERCLE DROIT DE LA POIGNEE	48C135	
9	1	HANDLE HALF-LEFT (BLACK)	COUVERCLE GAUCHE DE LA POIGNEE	48C136	
10	1	ELECTRONICS UNIT (110V)	UNITE ELECTRONIQUE (110V)	48C137	
10B	1	ELECTRONICS UNIT (220V)	UNITE ELECTRONIQUE (220V)	48C155	220V
11	1	THUMB WHEEL (ORANGE-021C)	MOLETTE	48C138	
12	4	PANHEAD TAPPING SCREW-B (M4x10)	VIS M4X10	48S162	
13	2	BRUSH SPRING (0.35x3x3.5T)	RESSORT	48C133	
14	2	CARBON BRUSH (7x11x17)	BROSSE AU CARBONNE (2 PCS)	48C109	
15	2	BRUSH HOLDER (7x11)	SUPPORT DE BROSSE AU CARBONE	48C110	
16	1	PANHEAD MACHINE SCREW (M4x10xP0.7)	VIS M4X10	48S163	
17	1	FLAT WASHER (Ø4xØ10x1)	RONDELLE	48K210	
18	1	RUBBER WASHER (Ø4xØ11x1)	RONDELLE DE CAOUTCHOUC	48K644	
19	1	PICKUP MAGNET (Ø8xØ15x5)	CAPTEUR MAGNETIQUE	48C111	
20	1	SPACER (Ø8xØ12x10.5)	ENTRETOISE	48K619	
21	1	MOTOR HOUSING (ORANGE-021C)	CARTER DU MOTEUR - ORANGE	48C139	
22	1	STATOR (110V-73x42x45)	STATOR (110V-73x42x45)	48C140	
22B	1	STATOR (220V-73x42x45)	STATOR (220V-73x42x45)	48C156	220V
23	2	PANHEAD TAPPING SCREW-B-W/WASHER (M5x60)	VIS	48S029	

24	1	FAN SHROUD (BLACK)	ENVELOPPE DE VENTILATEUR	48C141	
25	1	BALL BEARING (608)	ROULEMENT A BILLES 608-2RS	48Q268	
26	1	ARMATURE (110V-73x42x45)DONER	ROTOR (110V-73x42x45)	48C142	
26B	1	ARMATURE (220V-73x42x45)	ROTOR (220V-73x42x45)	48C158	220V
27	1	BALL BEARING (6000)	ROULEMENT A BILLES	48Q269	
28	1	GEAR PLATE (SILVER)	PLAQUE D'ENGRENAGE	48C143	
29	1	EXTERNAL CIRCLIP (S-12)	ANNEAU DE RETENU EXTERNE	48K620	
30	1	OUTPUT GEAR (M1.0x33T)	ROUE DENTEE (M1.0x33T)	48C144	
31	1	SHAFT RACE (Ø15.1xØ22x5)	ARBRE (Ø15.1xØ22x5)	48C145	
32	1	BALL BEARING (6002)	ROULEMENT A BILLES (6002)	48Q273	
33	1	GEAR HOUSING (SILVER)	BOITE D'ENGRENAGE	48C146	
34	4	PANHEAD TAPPING SCREW-B-W/WASHER (M5x50)	VIS TARAUD (M5x50)	48S264	
35	1	RIGHT CASE SLEEVE COVER (BLACK)	COUVERCLE DROIT	48C147	
36	1	LEFT CASE SLEEVE COVER (BLACK)	COUVERCLE GAUCHE	48C148	
37	1	BALL BEARING (6203)	ROULEMENT A BILLES (6203)	48Q274	
38	1	INTERNAL CIRCLIP (R-40)	CIRCLIP INTERNE R-40	48K645	
39	1	PARALLEL KEY (4x4x8)	CLAVETTE	48J723	
40	1	SPINDLE (5/8"x11-255MM)	ARBRE (5/8"x11-255MM)	48C149	
40B	1	SPINDLE (M14xP2.0-255MM)	ARBRE (M14xP2.0-255MM)	48C159	220V
41	2	PANHEAD MACHINE SCREW (M5x10xP0.8)	VIS TARAUD (M5x10xP0.8)	48S265	
42	1	GUARD STRAIGHT-MATE	PROTEGE MEULE	48C150	
43	1	GUARD BRACKET	SUPPORT PROTEGE MEULE	48C151	
44	1	INNER FLANGE (Ø26)	BRIDE INTERNE 26MM	48C152	
45	1	FLANGE NUT (5/8"-11)	ECROU A EMBASE 5/8"-11	48K646	
45B	1	FLANGE NUT (M14)	ECROU A EMBASE M14	48K647	220V
46	1	MANDREL ARBOR (5/8"-11)	ARBRE MANDRIN 5/8"-11	48C153	
46B	1	MANDREL ARBOR (M14)	ARBRE MANDRIN M14	48C160	220V
47	1	LOCK NUT WRENCH (30MM)	CLÉ À ÉCROU 30MM	48Z041	
48	1	WRENCH (M24)	CLÉ M24	48Z042	
48B	1	WRENCH (M17)	CLÉ M17	48Z045	220V
49	1	WRENCH (M22)	CLÉ M22	48Z043	
50	1	HEX KEY (M5)	CLÉ HEXAGONALE M5	48Z044	